

ENDURA 
Custom Printed Clothing 2009

Road > Mountain > Triathlon



> About Us

For over 15 years, we've been manufacturing cycle sport clothing for both professional and amateur cyclists working diligently to make sure that our products and service meet the highest standards expected from our customers.

We serve clubs and teams directly as well as retailers and organised events. Endura® products are used worldwide by cyclists, triathletes and fitness enthusiasts who demand the best apparel available. We pride ourselves on high quality, great performing products using the best fabrics and trims. This year we have again upgraded and refined our range based on the best feedback available....our customers.

All of our clothing is printed using state-of-the-art digital sublimation printers to provide unbeatable definition and consistent quality whilst offering almost limitless graphic and design options.

We make it simple for our customers. There are no hidden costs for extra colours etc., the price shown here in the brochure is the price of the garment.....simple!

> Ordering Procedure

1. Call us (**01506 497749**) or email us for current delivery times or with any questions you may have.
2. Send us your order and design (this can be anything from electronic finished artwork to a rough sketch on our design sheet, however we do need high definition logos/graphics).
3. Arrange payment of **50% deposit** to secure production slot and be given estimated delivery date.
4. Artwork will be sent to you to approve colours and layout along with a copy of your order.
5. Upon artwork and order approval (and the return of any loaned sizing samples) we will begin production.
6. Clothing will be shipped out to you **free of charge*** by courier to your delivery address.

> Pricing & Payment Terms

All prices shown exclude VAT. ***Delivery is free** for UK mainland but will be charged at cost to all other areas. A deposit of 50% of the order value should be sent with the order. The remaining balance is due after receipt of items, within seven days of the invoice date.

> Discounts

Discounts are based on the cost of the order before VAT and artwork. Our discount structure is:

£750+ = 10% **£1250+ = 12%** **£1750+ = 15%** **£2650+ = 17%** **£3500+ = 20%** **£5000+ = 22%** **£7000+ = 25%**

(Discounts may be withdrawn where late payment occurs).

> Minimum Order Quantities

Orders for printed clothing should contain at least 15 items of clothing generated from one set of artwork. (not including accessories)

Smaller orders of between 8 - 14 garments are available but carry a 20% surcharge.

> Artwork Charge

There is a flat rate origination charge of £60 for one set of new artwork (repeat jobs have no charge). This cost is for set-up and not a design charge. Finished designs and logos should be supplied to us.

> Supply of Graphics

Ideally digital files in Illustrator, PDF, Coreldraw or EPS format. Most other formats are acceptable provided the resolution is high enough (above 200dpi). Email electronic artwork to us at artwork@endura.co.uk We can scan high quality hard copies if electronic versions are not available. Website graphics are not suitable. As manufacturers of the garments, our **Endura®** logo is placed on the chest of tops and leg of shorts.

The only design restriction to consider is to try to keep any important design elements or logos away from seam areas as matching over seams is difficult when producing garments of varied styles and sizes. There are no limits to the number of colours on your printed garments - and no extra cost. If you have access to a Pantone® colour chart then this is ideal for selection. You can also refer to our colour chart on page 17.



Lycra®

Lycra® in sportswear adds performance through technology, comfort, ease of movement and shape retention.



CoolMax®

For warm weather cycling, CoolMax® allows moisture absorption so that garments don't get clammy. Excellent moisture transport away from the skin.



Fieldsensor®

A performance fabric that provides superior muscle support and uses multi-layers and capillary action to push perspiration out towards the fabric surface to keep the wearer comfortable and dry.



Evolution™

Evolution™ fabric is a highly waterproof and moisture permeable lightweight fabric with great stretch. Its unique inner surface maintains an optimal dry feel.



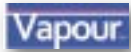
Dry-Clim™

A technically developed material composed of microfibrils designed to expel sweat and provide maximum comfort for the athlete.



Roubaix®

Ideal for cold weather cycling, Roubaix® is a lightweight, thermal fabric that stays comfortable even when wet and is quick drying.



Vapour™

Vapour™ fabric is an extremely lightweight fast drying showerproof fabric with good stretch. Its unique properties mean that it can be compacted to a small size easily.



Windtex®

A lightweight waterproof and windproof membrane combining softness, durability and superior comfort.



Estela™

Estela™ fabric is low drag triathlon specific fabric which is water repellent and provides good stretch and muscle support.

> We can provide fabric swatch cards on request. See page 15

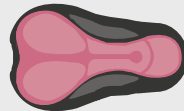


Elastic Interface®

Our men's and women's cycling pads are top of the range multi-density stretch design. Elastic Interface® pads reduce chafing and friction because they move with your body; super-soft wicking microfibre fabric next to skin provides efficient moisture management and hygiene.



600 Series (Men's)



600 Series (Women's)

Triathlon Pads

Our men's and women's Dolomiti discrete inserts are specifically designed for triathletes. They are slimline and super-lightweight for maximum comfort and performance. Dolomiti pads reduce chafing and friction because of their high stretch properties. They have a microfibre face next to skin for efficient moisture wicking and hygiene.



C4 Series (Men's)



C4 Series (Women's)

Note: All our shorts and suits are available with women's specific pad. Garment codes should be suffixed with a "W" to indicate a female pad is required.

> Women's specific information on page 16



IMPROVED

> Road Jersey (Short Sleeve)

S (fit guide on page 15)

Our best selling jersey. Ideal for moderate to hot weather or to wear underneath a jacket in colder conditions.

The Road Jersey comes in a choice of zips to make it perfect for all conditions. Made from fast wicking fabric, it features a 3-compartment rear elasticated pocket, elasticated sleeves and hem.

- > 4001 Short Sleeve Short zip - £35
- > 4005 Short Sleeve Full zip - £36
- > 4005Q Short Sleeve 3/4 zip - £36
- > 4005C Short Sleeve 3/4 Concealed zip - £38



IMPROVED

> Road Jersey (Long Sleeve)

S (fit guide on page 15)

Ideal for moderate weather conditions with the added protection of long sleeves.

The Road Jersey comes in a choice of zips and is made from fast wicking fabric, it features 3-compartment rear elasticated pocket, elasticated sleeves and hem.

- > 4002 Long Sleeve Short zip - £37
- > 4006 Long Sleeve Full zip - £38
- > 4006Q Long Sleeve 3/4 zip - £38
- > 4006C Long Sleeve 3/4 Concealed zip - £40



IMPROVED

> Road Jersey (Sleeveless)

S (fit guide on page 15)

Ideal for very hot weather conditions.

The Sleeveless Road Jersey comes with a choice of longer zips for enhanced ventilation. Made from fast wicking fabric. It features bound armholes to reduce irritation and a 3-compartment rear elasticated pocket and hem.

- > 4003 Sleeveless Full zip - £34
- > 4003Q Sleeveless 3/4 zip - £34
- > 4003C Sleeveless 3/4 Concealed zip - £36

New

Pro Road Jersey



S (fit guide on page 15)



Our top of the range road shirt. Based on our extremely popular Endura® FS260 Pro jersey in performance fabrics combined with an athletic cut.

The Pro Road Jersey comes with short sleeves and a full length zip for maximum ventilation. Made from fast drying CoolMax® fabric. It features flatlock seams throughout for superior comfort, silicone gripper on waist hem for secure fit, mesh underarms, glasses wiper, media port reflective details on rear and three rear stowage pockets plus secure zip pocket.

> 4065 Pro Road Jersey - £59



mesh underarms & flatlock stitching



media port



glasses wipe



> Skinsuits



T (fit guide on page 15)

Our quality skinsuits are ideal for racing and time trials.

The Skinsuits are available in long or short sleeve and are made from high quality Lycra® with 3/4 length zip, market leading Elastic Interface® pads in the shorts with new improved silicone leg-gripper.

The Premium Skinsuits are as above but made in CoolMax® fabric with number tags attached on rear.

- > 4010 Short Sleeve - £55
- > 4011 Long Sleeve - £57
- > 4024 Premium Short Sleeve - £62
- > 4025 Premium Long Sleeve - £64



IMPROVED

> MTB Jersey (Short Sleeve)

L (fit guide on page 15)

The MTB Jersey is specifically designed with a relaxed fit for greater freedom of movement and a more casual appearance.

The MTB Jersey has loose fitting sleeves and hem. It comes with a choice of zips. Made from fast wicking fabric. New features now include a media port and glasses wipe. The MTB shirt also features 3-compartment rear elasticated pocket with one zip compartment.

- > 4004 Short Sleeve 3/4 zip - £36
- > 4004C Short Sleeve 3/4 Concealed zip - £38



media port



glasses wipe



IMPROVED

> MTB Jersey (Long Sleeve)

L (fit guide on page 15)

The relaxed fit long sleeve MTB Jersey is designed for maximum freedom of movement and can be used on it's own or worn over a jersey or base layer in cooler weather.

The MTB Jersey has loose fitting sleeves and hem. It comes with a choice of zips. Made from fast wicking fabric. New features now include a media port and glasses wipe. The MTB shirt also provides a 3-compartment rear elasticated pocket with one zip compartment.

- > 4009 Long Sleeve 3/4 zip - £38
- > 4009C Long Sleeve 3/4 Concealed zip - £40



media port



glasses wipe





IMPROVED

> **Downhill Jersey**

L (fit guide on page 15)

Made from new polyester material in generous fit V-neck style with long sleeves, Lycra® cuffs and collar as well as a convenient glasses wipe stitched into the hem.

Baggy enough to be worn over body armour. The Downhill Jersey is available with standard full length sleeves or 3/4 length sleeves.

- > 4038 Downhill Jersey - £36
- > 4038Q Downhill Jersey (3/4 Sleeves) - £35 **New**



glasses wipe



> **Kids Road Jersey**

S (fit guide on page 15)

Made from the same fabric as our adult jerseys the kids version comes in three sizes (age 5, age 6-8, age 9-11) and has short sleeves and a short zip with rear pockets.

- > 4030 Short Sleeve Short zip - £29*

* Note: Kids jerseys are VAT exempt.



> **Running Vest**

Ideal for running and jogging in warm weather conditions.

Men's Running Vest is loose fitting full length made from breathable high wicking fabric.

- > 3009 Running Vest - £22

INSULATING



> **Grid Fleece**



L (fit guide on page 15)

The Grid Fleece uses Dri-Clim™ brushed back waffle fabric for comfort and insulation with slightly larger fit so that it can be worn over a base layer or Road Jersey.

It features a full length zip and 3-compartment rear pocket.

> 4008 Grid Fleece - £38

INSULATING



IMPROVED

> **Roubaix®**



S (fit guide on page 15)

The Roubaix® is ideal for use when the weather turns cold.

Made from a new and improved lightweight brushed back Roubaix® thermal fabric, The Roubaix top has good stretch for a snug fit. It comes with a full length zip and 3-compartment rear pocket.

> 4033 Roubaix® Jacket - £45

COMPACT
WIND/SHOWERPROOF



New

> **Ultra Packable**



S (fit guide on page 15)

A light-weight wind cheater which is compact enough to be folded away when not required.

The Ultra Packable is made from a lightweight showerproof fabric and is compact enough to be stowed in rear pocket.

> 4066 Ultra Packable - £39



extremely compactable

WATERPROOF/
WINDPROOF FABRIC



> Windtex® Jacket



S (fit guide on page 15)

The Windtex® Jacket is made from waterproof/windproof breathable membrane fabric. Perfect for severe winter conditions. The Windtex® Jacket is available in two different weights of fabric, both have the same Windtex® waterproof and windproof membrane.

The Windtex® Jacket has a thick brushed back inner for maximum insulation in very low temperatures.

The Lightweight Windtex® Jacket has thinner insulation for less severe temperatures whilst still offering the same level of protection from wind and rain.

Both jackets have full zip and 3-compartment rear pocket.

- > 4017 Windtex® Jacket - £49
- > 4067 Lightweight Windtex® Jacket - £49 **New**

WATERPROOF/
WINDPROOF FABRIC



IMPROVED

> Pro Windtex® Jacket



S (fit guide on page 15)

The Pro Windtex® Jacket has the same features as the standard Windtex® jacket above and is also available in the two different weights of fabric.

Additional features include; Flatlock stitching for maximum strength and comfort, reflective detail for improved visibility and zipped rear pocket compartment for valuables with media port.

- > 4017P Pro Windtex® Jacket - £55
- > 4067P Pro Lightweight Windtex® Jacket - £55 **New**



flatlock stitching



reflective piping on rear pocket zipper



media port

COMPACT
WINDPROOF



IMPROVED

> Gilet



S (fit guide on page 15)

A light-weight wind cheater which is compact enough to be folded away and stored in your jersey when not required.

Our Gilet has been completely redesigned for this year with better fit, improved fabrics and construction including lightweight stretch back mesh panel for ease of movement and bound armholes for reduced irritation.

The Pro Gilet additionally features flatlock stitching, reflective detail on lower back and front shoulders as well as a side zip vent for easy pocket access.

- > 4032 Gilet - £30
- > 4032P Pro Gilet - £35



extremely compactable



bound armholes



reflective detail (pro gilet)



New

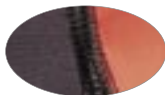
> Pro Bibshorts



Our top of the range Pro Bibshorts are made from high quality Fieldsensor® fabric with flatlock stitching throughout for superior comfort and strength.

Features include; discreet rear pocket for race essentials, lightweight White mesh upper bibs (which prevents show through on light coloured jerseys) for moisture control, bound neck and armholes for reduced irritation. Elastic Interface® pads and silicone leg gripper.

> 4068 Pro Bibshorts - £55



flatlock stitching



rear pocket



> Shorts



Shorts in "8 panel" construction with seamless inside leg. Made from quality Lycra® with Elastic Interface® pads and silicone leg gripper.

Available in CoolMax® or Fieldsensor® options.

> 4013 8 Panel Lycra® Short - £36
 > 4040 8 Panel Fieldsensor® Short - £44



> Bibshorts



Our classic Bibshorts are designed to offer a great fit and provide maximum comfort in the saddle.

Made from quality Lycra® with wide shoulder straps, Elastic Interface® pads and silicone leg gripper.

> 4015 Lycra® Bibshorts - £40



> Lycra® Biblongs & Bibknicks



Our Lycra® Biblongs and 3/4 Bibknicks are both made from quality Lycra® with wide shoulder straps for comfortable fit.

Lycra® 3/4 Bibknicks come with Elastic Interface® pads and silicone leg gripper.

Lycra® Biblongs have no pad so that they can be worn over other shorts. They have footloops for tight fit and reflective dot on rear ankle.

> 4034	Lycra® 3/4 Bibknicks	-	£39
> 4029	Lycra® Biblongs	-	£37

Note: Lycra available in colour options (image to left shows blue). See pages 17 & 18.



> Thermal Biblongs & Bibknicks



Thermal Biblongs and 3/4 Bibknicks are both made from thermal Roubaix® fabric with wide shoulder straps for comfortable fit.

Thermal 3/4 Bibknicks come with Elastic Interface® pads and silicone leg gripper.

Thermal Biblongs have double seat (no pad) so that they can be worn over shorts if required. They also have footloops for tight fit and reflective dot on rear ankle for increased visibility.

> 4045	Thermal 3/4 Bibknicks*	-	£42
> 4019	Thermal Biblongs*	-	£40

** Note:* Thermal only available in black (can still have printed panels). See page 17 & 18.



> Evolution™ Pro Biblongs



Designed for extreme winter riding made from a combination of Evolution™ waterproof, breathable stretch fabric on front and sides and Thermolite Roubaix® on rear. They will provide superior warmth, comfort and performance in the coldest of conditions.

Features include articulated knee design along with reflective trim on zip ankle pullers for snug fit. They have a double seat (no pad) so they can be worn over shorts if required

> 4048	Evolution™ Pro Biblongs*	-	£59
--------	--------------------------	---	-----

** Note:* Thermal only available in black (can still have printed panels). See page 17 & 18.



reflective trim on ankle

New

> Pro Tri Suit



T (fit guide on page 15)



rear view



Our brand new top of the range Pro Tri Suit delivers the highest level of performance on race days with advanced fabrics and contoured fit.

Made from Estela™ low drag, water repellent fabric and the very best material trims available. The suit is constructed with streamlined panels, Lycra® bound neck and arm holes and flatlock stitching throughout. It's ergonomically designed for stretch fit and low water resistance. Features include mesh panelling for unrestricted movement, rear zip with long pull cord and storm flap to eliminate chaffing. Shorts have our Dolomiti® tri specific pad, slimline silicone leg gripper and liner.

> 3001 Pro Tri Suit - £79



flatlock stitching



long pull cord

New

> Pro Tri Vest



T (fit guide on page 15)



rear view



The Pro Tri Vest delivers the highest level of performance on race days with advanced fabrics and fit.

Made from Estela™ low drag, water repellent fabric and the very best material trims available. The vest is constructed with streamlined panels, Lycra® bound neck and arm holes and flatlock stitching throughout. Other features include rear zip with long pull cord and storm flap to reduce irritation.

> 3003 Pro Tri Vest - £45



flatlock stitching



long pull cord

New

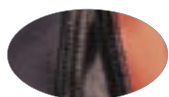
> Pro Tri Shorts



Designed for triathletes these pro level tri shorts are made to give maximum comfort and high level performance. The shorts come in a choice of standard or short leg lengths.

Made from Estela™ low drag, water repellent fabric and the very best material trims available. The shorts are constructed with streamlined panels and flatlock stitching throughout. They have flat drawstring with elastic waist, key pocket, Dolomiti® tri specific pad and silicone leg gripper.

> 3004 Pro Tri Shorts - £39
 > 3004S Pro Tri Shorts (short leg) - £39



flatlock stitching



rear view

New

> Elite Tri Suit



T (fit guide on page 15)

Our new entry level tri suit has all the details you would expect to find on higher priced tri suits. Packed with features this makes training or racing that bit more comfortable.

Made from high quality fast drying material with flatlock stitching for comfort and performance, finished with binding to reduce irritation. The suit has mesh rear pocket and rear zip with long pull cord. Shorts have tri specific pad, slimline silicone leg gripper and liner.

> 3002 Elite Tri Suit - £59



flatlock stitching



long pull cord

New

> Elite Tri Vest



T (fit guide on page 15)



rear view

The new entry level tri vest is packed with features and just like our other Elite tri products is comparable to competitors' top end offerings

Made from the best materials available and seamed with flatlock stitching throughout. Other features include mesh rear pocket, Lycra® bound neck and arm holes and rear zip with long pull cord and storm flaps to reduce irritation.

> 3006 Elite Tri Vest - £35



flatlock stitching



long pull cord

New

> Elite Tri Shorts



Designed for triathletes these tri shorts are made to give maximum comfort. Ideal for training and racing. The shorts come in a choice of standard or short leg lengths.

Produced using high quality materials. The shorts have ergonomic panelling, flatlock stitching, flat drawstring with elastic waist, Dolomiti® tri specific pad and silicone leg gripper.

> 3007 Elite Tri Shorts - £34
 > 3007S Elite Tri Shorts (short leg) - £34



flatlock stitching

> Tri Shorts only available in black (with printed panels). See page 18.

IMPROVED

> Headwear

Bandana made from breathable fabric with four panel construction and flatlocked outer seams for comfortable fit.

The Neck Tubes are made from seamless polyester for maximum stretch and versatility.

Race Caps are quarter design cotton caps with peak.

- | | | | |
|--------|----------------------------|---|-------------|
| > 4047 | Bandana (min order of 5) | - | £12 |
| > 4022 | Neck Tube (min order of 5) | - | £8 |
| > 4049 | Race Caps* | - | from £3.75* |

* Note: Race Caps price above based on an order of 100+ caps. Smaller amounts are available:

For 50+ pairs - £4.75 each

For 25+ pairs - £6.50 each (min order of 25)



New

> Cycle Mitts

Mitts are made from stretch Lycra® for comfortable fit and come with gel padding, sweat wipe and velcro wrist strap.

- | | | | |
|--------|---------------------|---|-------------|
| > 4070 | Custom Cycle Mitts* | - | from £5.75* |
|--------|---------------------|---|-------------|

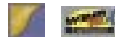
* Note: Cycle mitts price above based on an order of 100+ mitts. Smaller amounts are available:

For 50+ pairs - £6.75 each

For 25+ pairs - £8.50 each (min order of 25)



> Overshoes



Lycra® Overshoes can be fully printed. They have cleat hole and rear heel opening for damage limitation when walking.

Pro Overshoes are made from Windtex® waterproof and windproof fabric. They have silicone ankle gripper, reflective detail and heel zip for easy entry.

- | | | | |
|---------|-------------------|---|----------------|
| > 4023 | Lycra® Overshoes* | - | £11 |
| > 4023P | Pro Overshoes* | - | £23 New |

* min order of 5 pairs



reflective trim on ankle
(pro overshoe)





> Team Bag

Practical and durable heavy duty nylon team bag. Large main body with separate end compartments. Padded handles and shoulder carry-strap. Available in blue or black with one colour custom printed logos/team name.

- > 4060 Black with Print (min order of 5) - £17
- > 4060B Blue with Print (min order of 5) - £17



New

> Cycle Socks

Custom cycle socks with woven design/club name and colour of your choice.

- > 4071 Cycle Socks* - from £4.75*

* Note: Cycle socks price above based on an order of 100+ socks. Smaller amounts are available:

- For 50+ pairs - £5.75 each
- For 25+ pairs - £7.50 each (min order of 25)



> Warmers



Leg, Arm and Knee warmers available in a choice of Lycra® or Thermal fabric.

- > 4020 Lycra® Armwarmers* - £13
- > 4021 Thermal Armwarmers* - £16
- > 4020L Lycra® Legwarmers* - £16
- > 4021L Thermal Legwarmers* - £19
- > 4020K Lycra® Kneewarmers* - £12
- > 4021K Thermal Kneewarmers* - £15

* All of above min order of 5 pairs per garment

> Sizing Guide

Our garments are sized in letters from **XS** (Extra Small) to **XXL** (Double Extra Large).

Please see our size chart below for an approximate guide to garment sizes. This chart should only be used as a rough guide and if you are unsure of any sizes we can provide samples on request prior to you placing an order (sizing samples must be returned before order an order proceeds to production).

MEN'S	XS	S	M	L	XL	XXL
Chest (inches)	34-36	36-38	39-41	42-44	45-47	48-50
Chest (cm)	87-92	92-98	99-106	107-113	114-121	122-127
Waist (inches)	28-30	30-32	33-35	36-38	39-41	42-44
Waist (cm)	71-75	76-83	84-90	91-97	98-105	106-112

> Sizing Considerations

Different garments have different types of fit. For example a Skinsuit is tight fitting (for less drag) and a Training Top is looser fitting (so it can be worn over a jersey or base layer). Most people will be familiar with this trend on specific items. Our sizing is based on a fit that suits the majority of our customers and is industry standard. If you have a specific preference for a very tight or loose fit (mostly relevant on Road Jerseys and Skinsuits) then we suggest you order a larger or smaller size as appropriate.

A key to indicate the fit of each garment is placed next to the garment name on the pages throughout the brochure. The fit symbols are shown below:

T = Tight fitting (skin-tight)

S = Standard fit (sporting fit)

L = Loose fitting (casual fit)

Extreme sized garments are available; XXS and XXXL sizes can be made on request. These items carry a 15% surcharge to cover the additional cost of them being specially cut to order.

Altered garments are also usually available providing they are based on our standard sizes (i.e. a size Small Training Top with two inch longer sleeves). These also incur a 15% surcharge.

It is important to tell us if any altered garments are required when ordering as we can usually accommodate this, however after garments are made it is often difficult (and costly) or not possible to alter them.

Our **cycle shorts/skinsuits** have standard length legs that finish above the knee.

Our **triathlon short/suits** have shorter legs which finish higher than the cycle shorts (mid-lower thigh).

The short leg versions of the **triathlon shorts** have legs which finish even higher (upper thigh).

Our sizing guide above is only a guide and we would always advise that a sample garment be tested by a member of the club/team to ensure the sizes that you are ordering are the sizes that you are expecting. When placing an order we can supply sizing samples on loan. You can either call us to request these or email artwork@endura.co.uk with your club name/account number, delivery address and garments required. Sample swatch cards which contain cuttings from our range of fabrics can also be sent out on request. Before an order can proceed to production we require all sizing and fabric swatch samples to be returned.

> Garment Care

At Endura® we are very proud of the quality of our products . If looked after correctly the garments should last for several years. **Many of our customers have items that are now over ten years old!**

All our garments come with wash care labels but in addition to this we advise the following;

- Don't leave wet/damp garments in a heap to dry (this can cause discolouration of custom print).
- Don't use fabric softener (this softens the fabric and loosens the fit, especially of tighter fitting garments).
- Don't wash any softer items along with open Velcro® catches (this can tear and bobble softer materials).

> Women's Sizes

As shown on the opposite page, our garments are sized in letters from **XS** (Extra Small) to **XXL** (Double Extra Large). The sizes are based on standard male sizes. Our garments are unisex due to the high stretch and accommodation of the fabrics which means that women's specific fit items are not required. Because of this usually women take a size smaller (than they would if sizes were women specific). For example a "Medium" women may take a Small in our sizes. This is the general rule for tops, jackets and suits but on shorts usually a "Medium" women would take a Medium. This is only a guide and obviously varies hugely from person to person depending on your shape. As with men we would advise if you have not ordered before and are unsure of our sizes to request a sample from us to try on. Below is an additional chart which roughly equates our sizes to UK women's dress sizes.

	XS	S	M	L	XL	XXL
WOMEN'S	Size 10	Size 12	Size 14	Size 16	Size 18	Size 18+

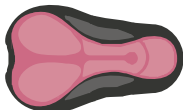
Extreme sized garments are available; Women who require a **XXS** (size 8) can get any item from our range but these items carry a 15% surcharge to cover the additional cost of them being specially cut to order.

> Women's Specific

All our garments are suitable for men or women. On most of the garments (jerseys, jackets etc) the only difference would be in choosing the correct size. However there are more differences on other items;

When ordering shorts/skinsuits, mark "**W**" after the code on the order form (i.e. "4015W" for Bibshorts). Any shorts that are marked as such will get a female specific pad. You can see our female pads on page 2.

On triathlon vests and triathlon suits (items 3001, 3002, 3003 & 3006) when a garment is for a woman it not only has the female specific pad, but also gets a modified bust fit and an inner support bra/liner.



600 Series (Cycle pad)



C4 Series (Tri pad)



Support bra/liner



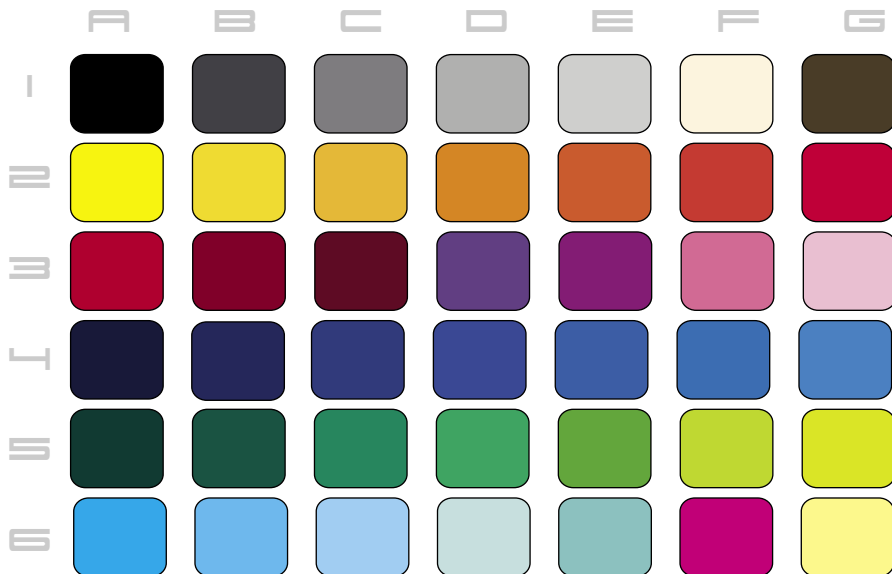
Images above show fit on female version of the Pro Tri Suit (3001W)

> Colour Guide

We use industry leading inks and materials that produce vibrant, high quality results. Almost any colour is possible to reproduce on fabric and we will always try to match your chosen colour as closely as possible.

When going through the order approval process we will send you a colour sample for approval (except on reprints), however, be aware that the same colour can vary slightly when printed on different fabrics due to the fabrics individual sheen and construction properties. This is normal and unavoidable.

If you have access to a Pantone® colour chart then this is ideal for selection. The colour chart below can also be used (this is just a selection our colours for easy reference, we can reproduce almost any colour).

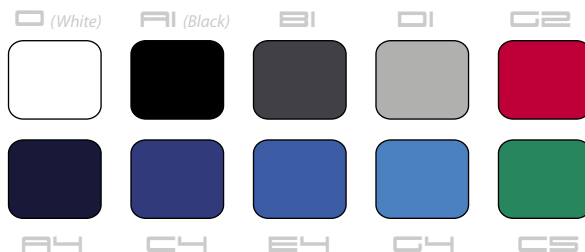
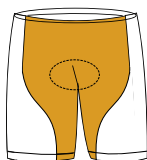


> Shorts Colours

For maximum durability and colour preservation we don't print on the main front and back areas (the shorts body) of the shorts and longs. The "shorts body" area is indicated in Orange in the diagram below.

Instead the "shorts body" is made from pre-dyed fabric. We stock several set colours of pre dyed fabric for shorts. It is worth considering the shorts colour before choosing the colour for the rest of the clothing (as you may want the printed colour to match the). Regardless of the fabric and colour chosen for the "shorts body", it is still possible to print any colour on the printed areas of the shorts. The different colours available for "shorts bodies" are shown below (not all colours are available on all items, see opposite page for more information):

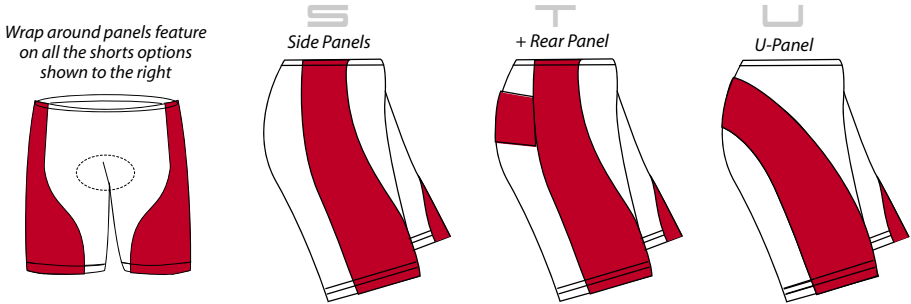
Shorts body area indicated in Orange



> All shorts colour options are available at no extra cost

> Shorts

Our shorts design has been updated for this year. All our cycle shorts (not including longs, 3/4's or tri shorts) feature "wrap around" panels; where the printed panel wraps around the lower leg of the shorts towards the front of the thigh (see diagram below left). This gives a sleek shape to the shorts and also allows for additional sponsors logos/graphics to be placed at the front of the legs. There are three different styles (S, T or U) of shorts construction to choose from depending on which best suits your design. These options can be seen below:



Images above show panel construction and Red area indicates printed panels (White area indicates shorts body)

All the shorts options are available at no additional cost, so no matter which style you choose for your design the price is still the standard book price as shown in the previous pages of this brochure.

> Options

Below shows the individual shorts body colour and panel options available on certain items. Items not shown here (such as tri shorts) have no options as they have their own specific fabrics and construction.

● = This coloured short is available on this item ● = This panel option is available on this item
 ● = Available but Lycra® is used (not CoolMax®) X = Option not available on this item

> Skinsuits

- > 4010 Short Sleeve
- > 4011 Long Sleeve
- > 4024 Premium Short Sleeve
- > 4025 Premium Long Sleeve

> Pro Bibshorts

- > 4068 Pro Bibshorts

> Shorts

- > 4013 8 Panel Lycra® Short
- > 4040 8 Panel Fieldsensor® Short

> Bibshorts

- > 4015 Lycra® Bibshorts

> Lycra® Biblongs & Bibknicks

- > 4034 Lycra® 3/4 Bibknicks
- > 4029 Lycra® Biblongs

> Thermal Biblongs & Bibknicks

- > 4045 Thermal 3/4 Bibknicks
- > 4019 Thermal Biblongs

> Evolution™ Pro Biblongs

- > 4048 Evolution™ Pro Biblongs

Shorts Body Colour Options										Panels Options		
0	A1	B1	D1	G2	A4	C4	E4	G4	C5	S	T	U
●	●	●	●	●	●	●	●	●	●	●	●	●
●	●	●	●	●	●	●	●	●	●	●	●	●
●	●	●	●	●	●	●	●	●	●	●	●	●
●	●	●	●	●	●	●	●	●	●	●	●	●
X	●	X	X	●	X	X	●	X	X	●	X	X
●	●	●	●	●	●	●	●	●	●	●	●	●
X	●	X	X	●	X	X	●	X	X	●	●	●
●	●	●	●	●	●	●	●	●	●	●	●	●
●	●	●	●	●	●	●	●	●	●	●	●	●
●	●	●	●	●	●	●	●	●	●	●	●	●
X	●	X	X	X	X	X	X	X	X	●	●	●
X	●	X	X	X	X	X	X	X	X	●	●	●
X	●	X	X	X	X	X	X	X	X	●	●	X

Note: Options will be consistent throughout your order; for example if you have Red shorts then all shorts on your order will be Red except on items where Red is not available; Thermal Biblongs for instance would be Black.



ENDURA
Custom Printed Clothing 2009

www.endura.co.uk

T: 01506 497749

F: 01506 497750

E: artwork@endura.co.uk

Endura Ltd
16 Grange Road
Houston Ind. Est.
Livingston
EH54 5DE